

**CERTIFIED LAND CORNER RECORDATION**

DESCRIPTION OF CORNER EVIDENCE FOUND, AND ORIGINAL RECORD (If known)

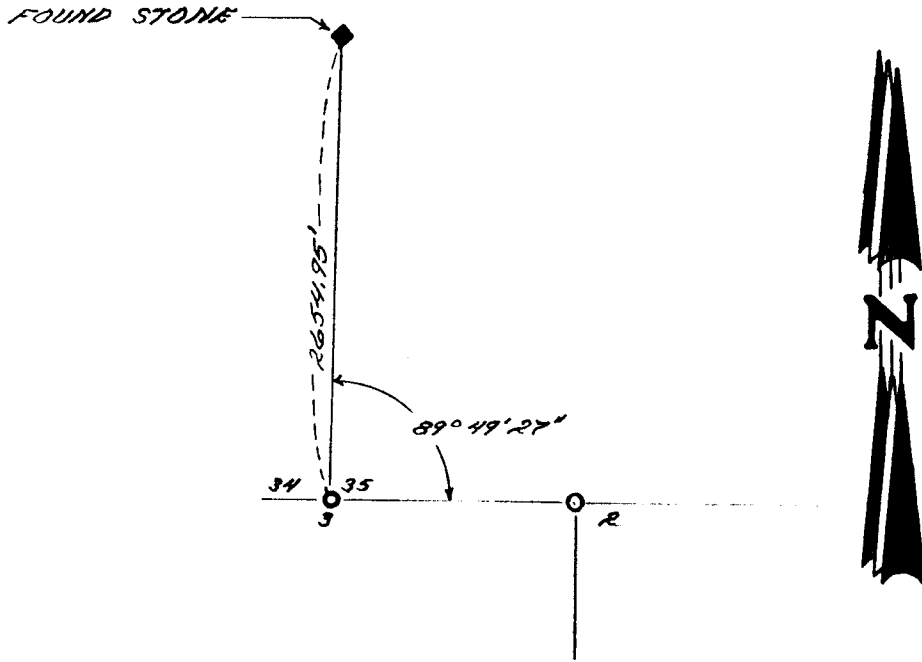
T. 13 N  
 34 ● 35 1/4  
 R. 66 W.

FOUND: GRANITE STONE FIRMLY SET, PROJ. 8" x 6" x 4" ABOVE GROUND, PLAINLY MARKED 1/4 ON WEST FACE

DESCRIPTION OF MONUMENT AND ACCESSORIES ESTABLISHED TO PERPETUATE THE ORIGINAL LOCATION OF THIS CORNER:

SEE TIES BELOW

SKETCH, WITH COURSE AND DISTANCE TO ADJACENT CORNER IF DETERMINED IN THIS SURVEY.  
 (May Sketch or Paste Reproduction on Reverse Side.)



I, JOHN A. STEIL certify that I have carefully performed or reviewed the work done on the diagrammed corner as reported on this recordation form and approve the same.

*John A. Steil*  
 Signature of Surveyor      U.S. 2500  
 Registration No.

STATE OF WYOMING,  
 Office of Clerk and Recorder,  
 County of Laramie

692525

This "corner record" was filed for record on the \_\_\_\_\_ day of APR 6 1983, 19\_\_\_\_, was noted on the cross-index plat and is assigned page No. \_\_\_\_\_, in book No. \_\_\_\_\_

*James C. Whitehead*  
 County Official

Cross Index No. _____	T. _____	R. _____	Mer.
_____	T. _____	R. _____	Mer.
_____	T. _____	R. _____	Mer.
_____	T. _____	R. _____	Mer.
_____	T. _____	R. _____	Mer.
_____	T. _____	R. _____	Mer.
_____	T. _____	R. _____	Mer.

X-17<sup>①</sup>      13-66